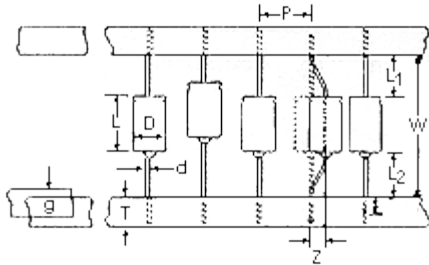




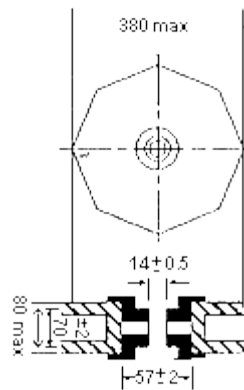
- Taping & Packing (Axial) -

I. Taping of Axial Leads

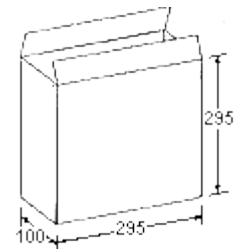


Symbol	Dimension (mm)
D	5,6,8
L	13~16
d	0,5,0.
p	10
w	63
g	0.6 max.
L1-L2	1.0 max.
Z	1.2 max.
t	3.2 min (Lead ends shall not extend beyond the tape.)
T	6.0 ± 1.0

Reel Dimensions



II. Packing and Q'ty



1. AMMO PACKING

Case	Packing		Weight		Carton Dimension
	Inner Box	carton	N.W.	G.W.	
6	2,000pcs	10,000pcs	8kgs	10kgs	380 x 580 x 380 mm
8	1,500pcs	7,500pcs	12kgs	14kgs	380 x 580 x 380 mm
10	1,000pcs	7,500pcs	18kgs	20kgs	380 x 580 x 380 mm

2. REEL PACKING

Case	Packing		Weight		Carton Dimension
	Inner Box	carton	N.W.	G.W.	
6	1,000pcs	5,000pcs	6kgs	8kgs	380 x 580 x 380 mm
8	800pcs	4,000pcs	6kgs	8kgs	380 x 580 x 380 mm
10	400pcs	2,000pcs	6kgs	8kgs	380 x 580 x 380 mm